



**EXECUTIVE SUMMARY
OF
ANDREW BURTT
26 MARCH 2019**



Farm Class 3 – North Island Hard Hill Country



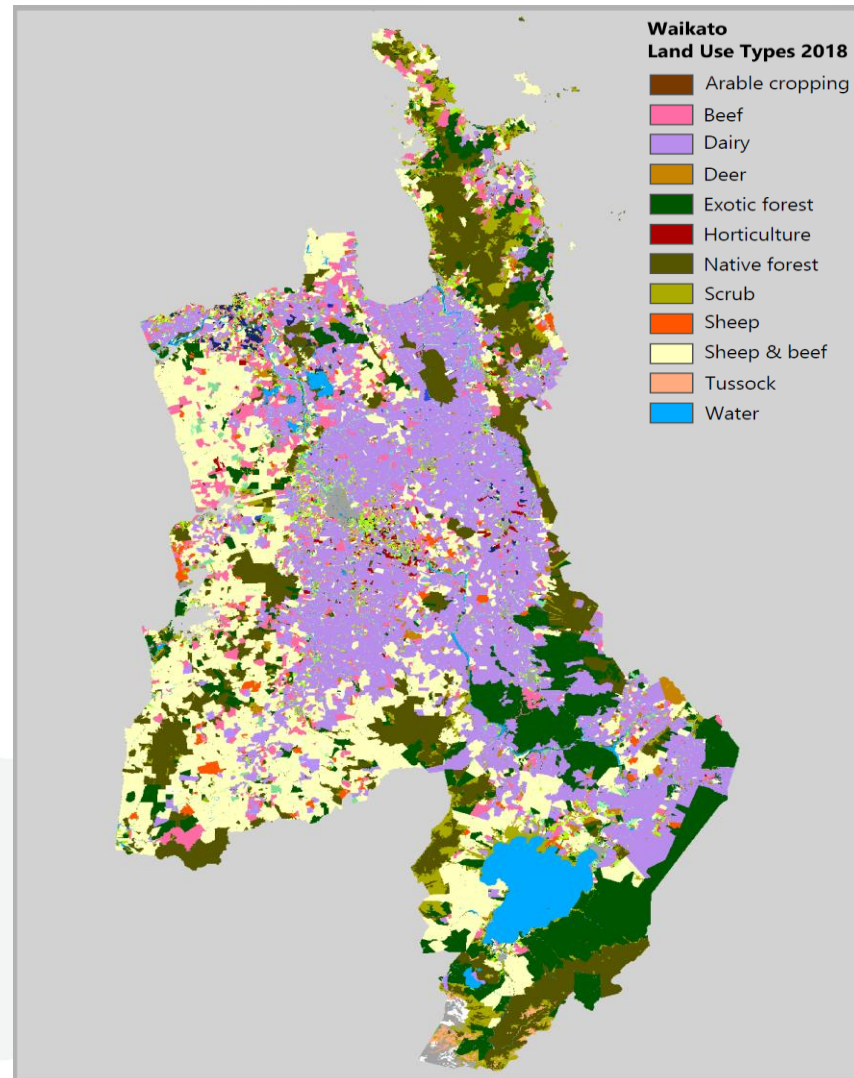
Farm Class 4 – North Island Hill Country



Farm Class 5 – North Island Intensive Finishing



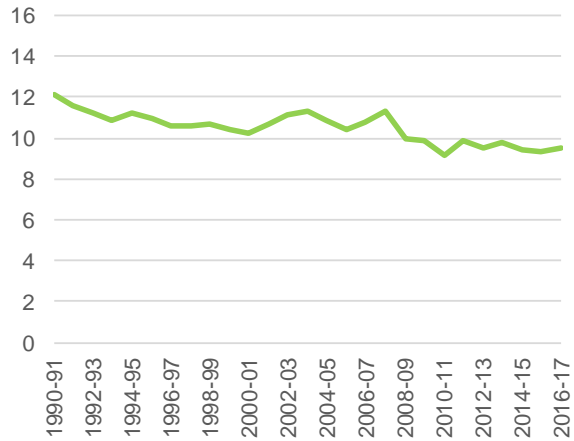
Land Use Types 2018



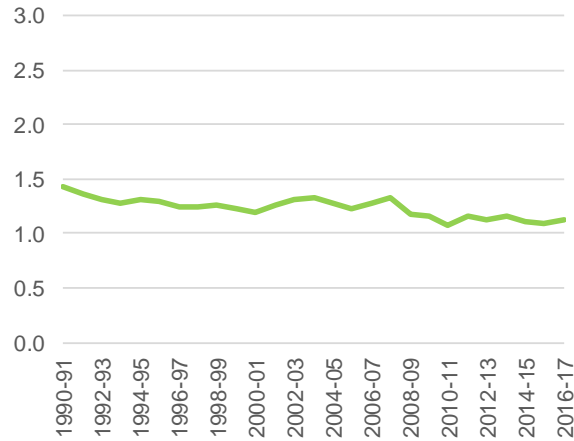
Farm Class 4 – Stocking Rate



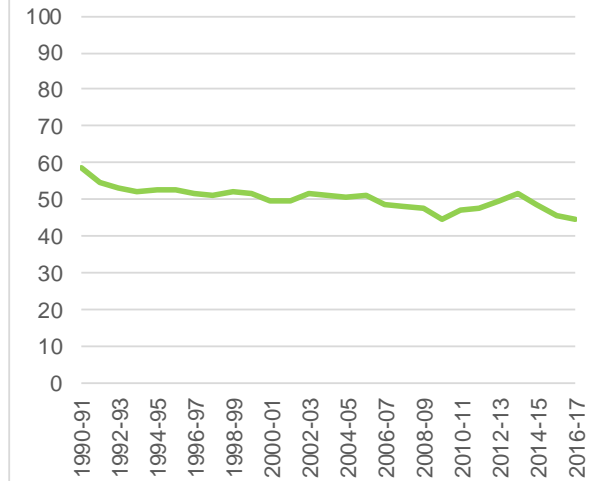
Stocking Rate SU/ha



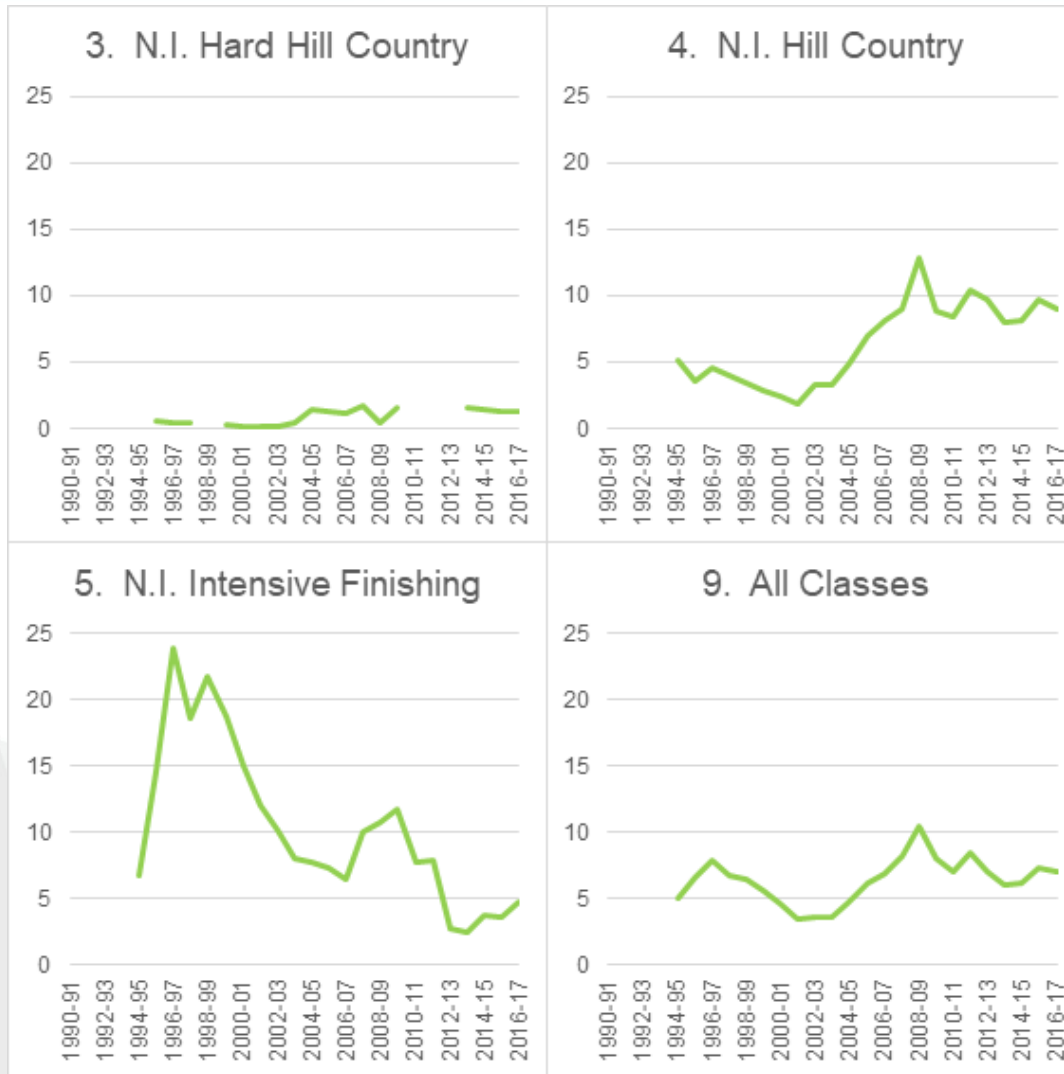
Stocking Rate equiv. cow/ha



Sheep:Cattle SU Ratio



Dairy Grazing revenue as a % of Gross Revenue



Sheep and beef farmers



- Have responded well to changing circumstances
- Have managed many risks
- Have adapted to new circumstances
- Manage multiple complex projects, environments, constraints and objectives
- Are measured in the changes they make
- Are resilient and resourceful
- So, maintaining flexibility to continue adaptation to the needs of markets, to objectives – theirs and those of their communities – are vital

