

Waikoikoi Wetland Trail

Pomahaka Catchment Project

A wetland area has been created by opening a tile, installing a sediment trap and then creating a wet area.

Constructed April 2017.

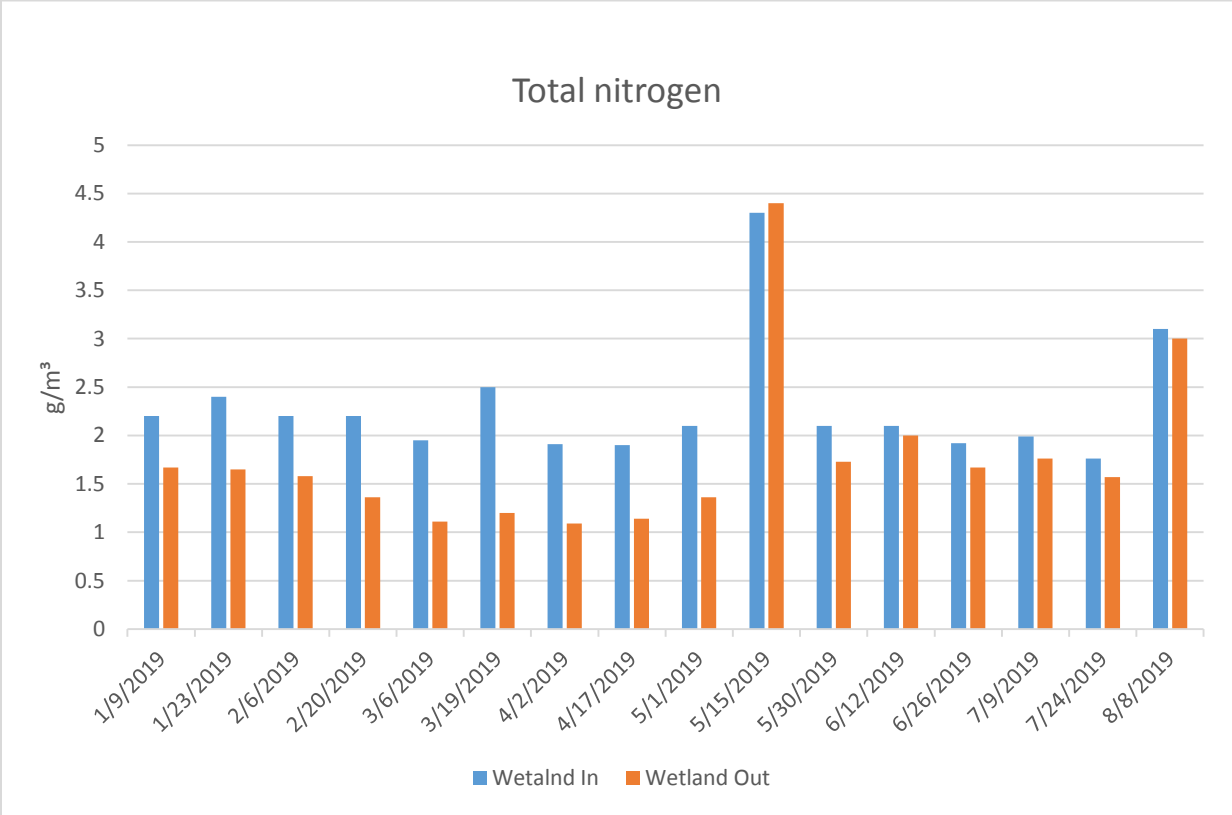
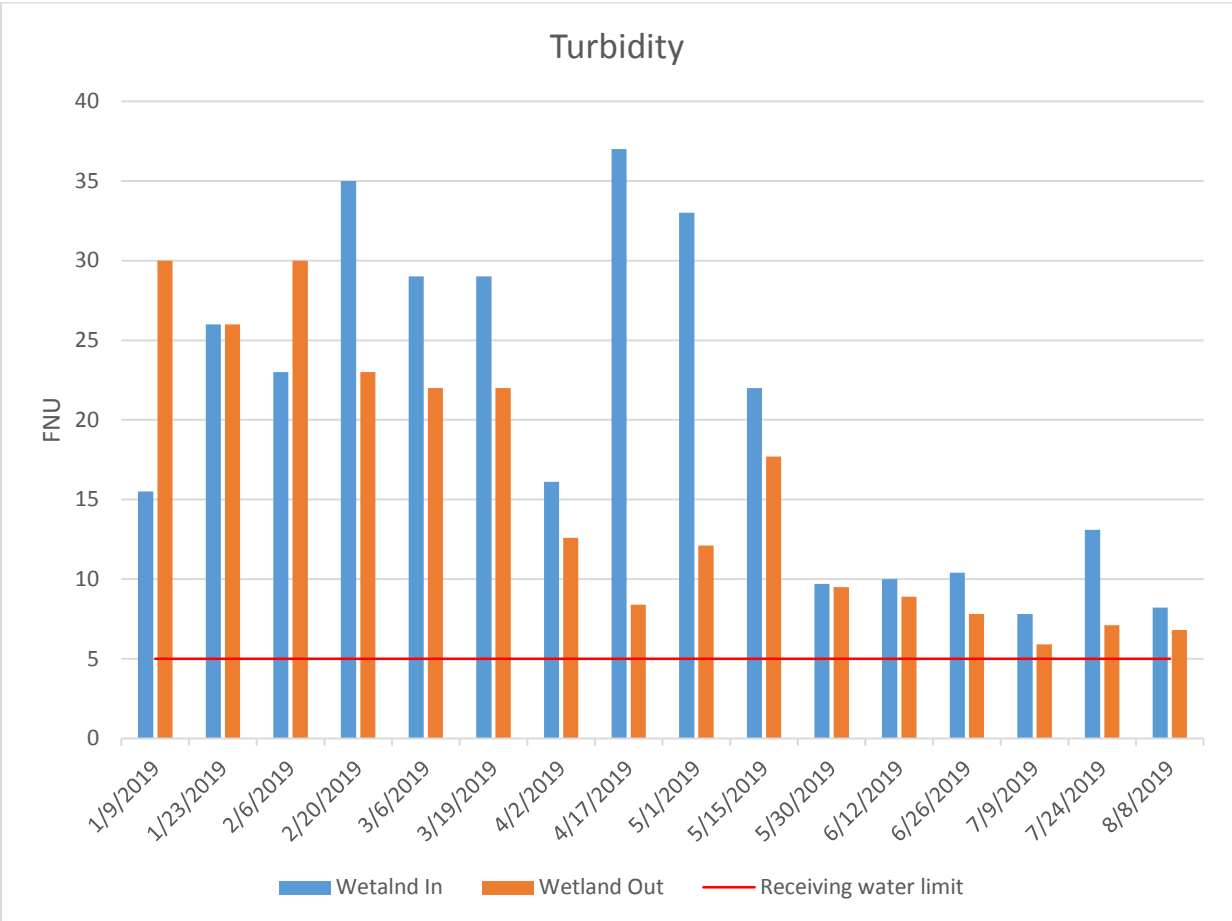
Source

Tile drained ephemeral stream.

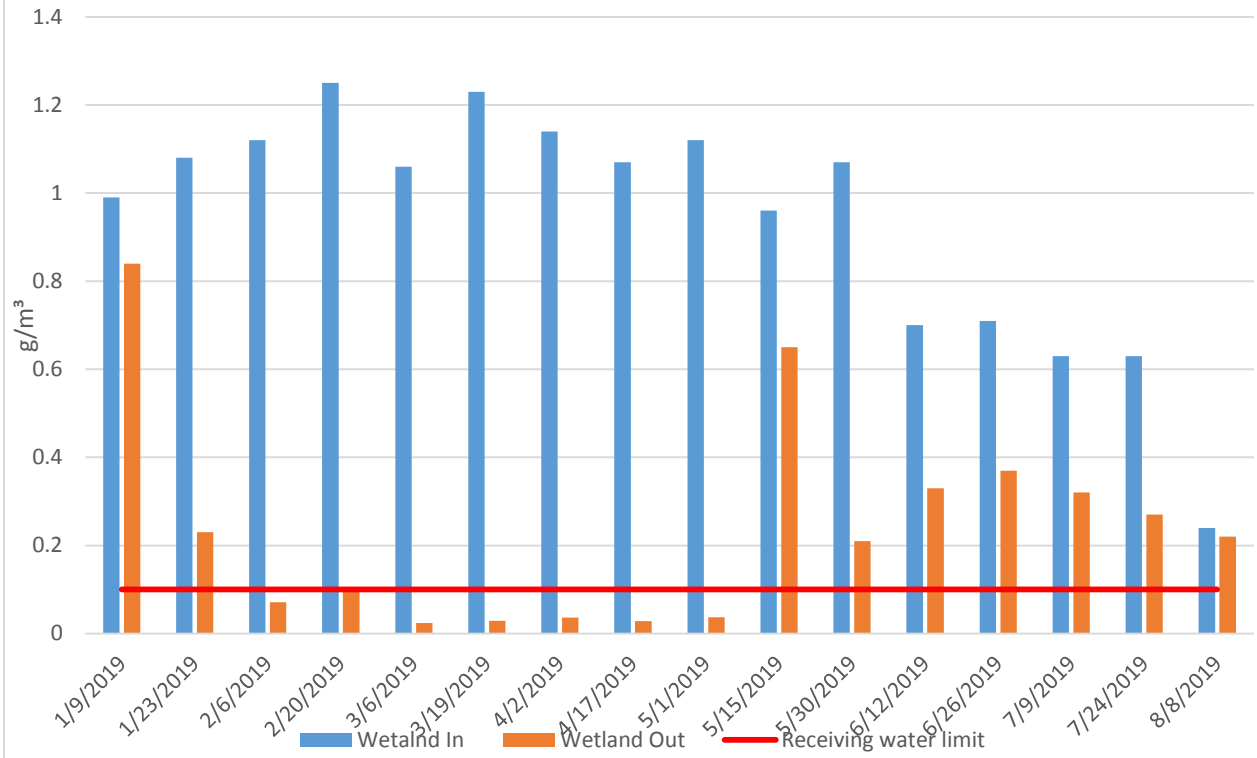
Sampling plan – 2 samples

Monitoring of Wetland in & Wetland out

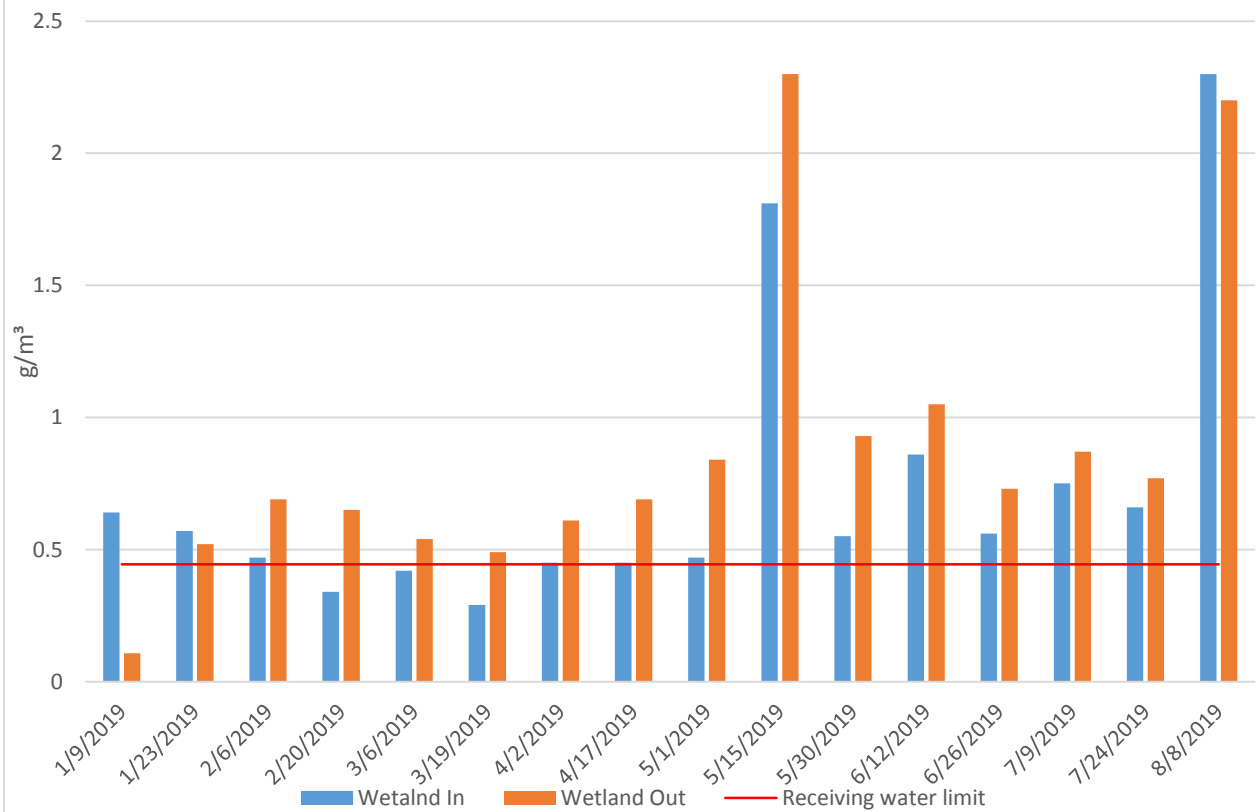




Ammonia



NNN



E.coli

