



WORKSHOP AGENDA

Date: Friday, 10 April 2026

Time: 1.00pm

Location: Council Chambers
Waikato Regional Council
Level 1, 160 Ward Street, Hamilton

Workshop Details: RTC Workshop 2 : ILM Session – Benefits, Measures & Weightings

Order Of Business

1	Karakia Timatanga.....	3
2	Workshop Paper(s).....	4
2.1	Investment Logic Mapping - Benefits, Measures & Weightings.....	4
3	Karakia Whakamutunga	25

1 KARAKIA TIMATANGA

Whakataka te hau ki te uru

Cease o winds from the west

Whakataka te hau ki te tonga

Cease o winds from the south

Kia mākinakina ki uta

Bring calm breezes over the land

Kia mātaratara ki tai

Bring calm breezes over the sea

E hī ake ana te atakura

And let the red-tipped dawn come

He tio

With a touch of frost

He Huka

A sharpened air

He hau hū

And promise of a glorious day

Tīhei mauri ora!

Behold we live

2 WORKSHOP PAPER(S)

2.1 INVESTMENT LOGIC MAPPING - BENEFITS, MEASURES & WEIGHTINGS

Rā | Date: 31 March 2026

Kaituhi | Author: Katherine Simpson, Team Leader - Transport Planning

Kaituku | Authoriser: Phil King, Director, Regional Transport Connections

TE ARONGA | PURPOSE

1. This report outlines the focus for the second Regional Land Transport Plan 2027 (RLTP) Investment Logic Mapping (ILM) workshop. Workshop 2 builds on Workshop 1 which was held on 10 March. The purpose of Workshop 2 is to seek feedback from RTC members on the key investment outcomes for the RLTP 2027. It is accompanied by the workshop presentation, notes from the first ILM workshop, and the refined problem statements and example benefits that will be discussed.

KŌRERO WHAKATAKI | EXECUTIVE SUMMARY

2. This memo supports the upcoming second ILM workshop, which is a key step in the RTC's role in shaping the strategic direction of the 2027 RLTP. Building on the problem statements developed and discussed in Workshop 1, the session will focus on confirming a shared understanding of the agreed regional transport problems and progressing to the definition of benefits associated with addressing those problems.
3. During the workshop, members will be asked to identify the expected outcomes of investment, consider how success should be measured, and agree on the relative importance of identified benefits. These discussions will inform benefit measures and proposed weighting values that help guide future investment focus within the RLTP.
4. This workshop completes the ILM process and directly contributes to two core outputs: a one-page Investment Logic Map and a Benefit Management Plan. Together, these outputs provide a clear and robust rationale for transport investment decisions, support transparency, and ensure alignment with regional priorities. The attached materials are provided to support members' preparation and enable effective, focused discussion during the workshop.

ĀPITI HANGA | ATTACHMENTS

1. **Regional Land Transport Plan (RLTP) Investment Logic Mapping (ILM) Workshop 1 Slides and Notes (Doc # 35338578)** [↓](#)
2. **Refined Problems and Example Benefits (Doc # 35338579)** [↓](#)

Waikato RLTP

Workshop 1 – Problems

20th March 2026



Karakia

Whakataka te hau ki te uru
Whakataka te hau ki te tonga
Kia mākinakina ki uta
Kia mātaratara ki tai
E hī ake ana te atakura
He tio
He Huka
He hau hū
Tīhei mauri ora!

Cease o winds from the west
Cease o winds from the south
Bring calm breezes over the land
Bring calm breezes over the sea
And let the red-tipped dawn
come
With a touch of frost
A sharpened air
And promise of a glorious day
Behold we live

Introductions

Facilitator
Nerissa Harrison

Participants
Regional Transport Committee

Observers
RAG
Council Staff
Inter-regional reps



Agenda

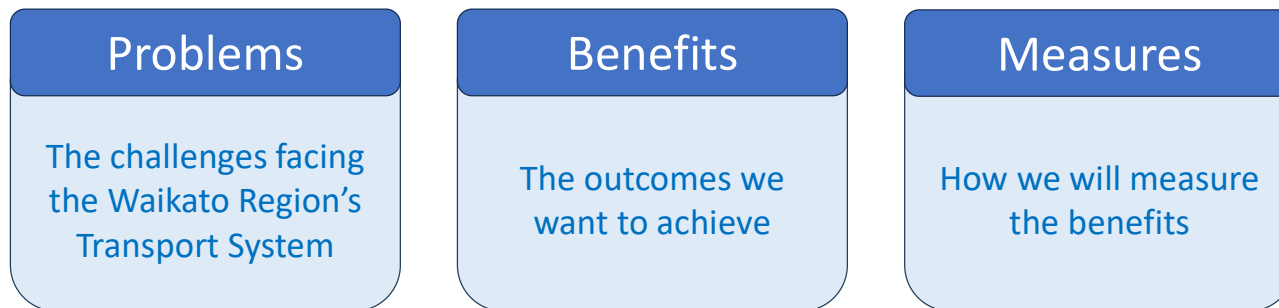
- Purpose and Expectations
- Context
- Develop problems statements
- Discuss benefit statements (if we have time)



Purpose

To prioritise investment we need clear statements on why we need to invest, what we want to achieve, and how we will measure it.

- Agree on Problem statements
- Start discussion Benefit statements



Expectations

Facilitator

- Get you talking
- Guide for clarity and compliance
- Keep you focused

Participants

- Active participation
 - Make suggestions
 - Ask questions
 - Listen
- Focus on the intent of the statements
- Focus on regional problems (that have local relevance)

Observers

- Only participate if
- Requested, or
 - You have an essential insight

Context

RLTP

- Sets out objectives and priorities for funding
- Land transport system
- Long-term (30-years)
 - should consider current GPS but should not be limited by it



Current GPS

Strategic Context

The 2024-27 NLTP and corresponding RLTPs are expected to prioritise projects and activities that progress the GPS 2024 priorities. In doing this, the focus should be on achieving the following impacts in the short to medium-term:

Economic Growth and Productivity

- reduced journey times and increased travel time reliability
- less congestion and increased patronage on public transport
- improved access to markets, employment and areas that contribute to economic growth
- more efficient supply chains for freight
- unlocked access to greenfield land for housing development and supporting greater intensification.

Increased Maintenance and Resilience

- more kilometres of the road network resealed and rehabilitated each year
- fewer potholes
- a more resilient road and rail network.

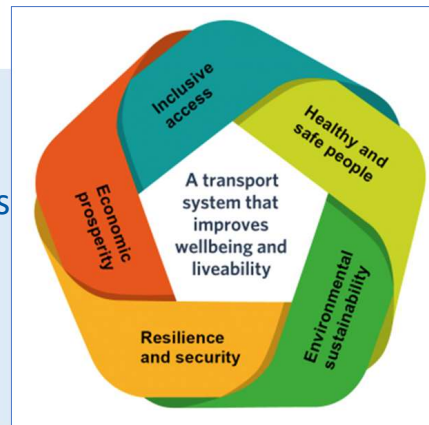
Improved safety

- reduction in deaths and serious injuries
- increased enforcement.

Value for Money

- better use of existing capacity
- less expenditure on temporary traffic management.

MOT Outcomes



Investment Logic Map



Problem statements

EXAMPLE

Cause

Outdated library resources are
resulting in declining library use

Effect

Problem statements should be:

- ✓ Clear
- ✓ Compelling (to investment decision makers)
- ✓ Have a cause and effect

They will sit within the RLTP and be supported by evidence.

- don't need to include context, detail, or scope eg 'Waikato Regional Land Transport System'

How we'll develop problem statements

1. Brainstorm issues or challenges
2. Consolidate - Group or weed out
3. Write problem statements (with clear causes and effects)
4. Review
 - Are they clear and compelling?
 - Do we have evidence?
 - Which is most or least important?



Brainstorm

- What are the issues or challenges facing the transport system?
(Don't worry about whether you're naming causes or effects)

Notes from the brainstorm are spread across two slides



Brainstorm – Notes page 1 of 2

THEME: Funding and revenue

- Affordability and funding limitations (eg rates capping) are restricting our ability to maintain and operate our system and meet public expectation of level of service and ensure our system is 'fit for purpose' for the level of traffic.
- Regulations are causing lack of funding efficiency.
- Funding and revenue options could be congestion charging, toll roads, Safety camera revenue, Forestry rating value vs use of network.

THEME: Economy, Growth, and productivity

- We're unable to maintain and improve performance as the region grows.
- We're not getting ahead of the growth (incl. development and fast track).
- Productivity will be impacted.
- Safety is a concern
- Its affecting ability to live, work and play.
- Emissions will increase with growth if we do nothing.
- Tourism is affected by disruption. Queues at one lane bridges eg 10km long queues in TCDC. Affecting operation and business eg rubbish trucks.
- Be mindful of port expansions (inland and Tauranga etc). Role of Waikato on national economy.
- Roads not designed to carry level of traffic.
- Interregional connections are critical so people can move around.
- Increasing congestion on key routes
- Competition for infrastructure - Competing needs (car,bus,freight etc), different users. Passenger trains on a freight network.
- Lack of efficiency on our roads.
- Driver delays (eg taupo bridge) affecting economy.
- Capacity constraints on rail network.
- Dependency on fuel – electrification. Emissions reduction

Brainstorm – Notes page 2 of 2

Theme: Access, travel choice

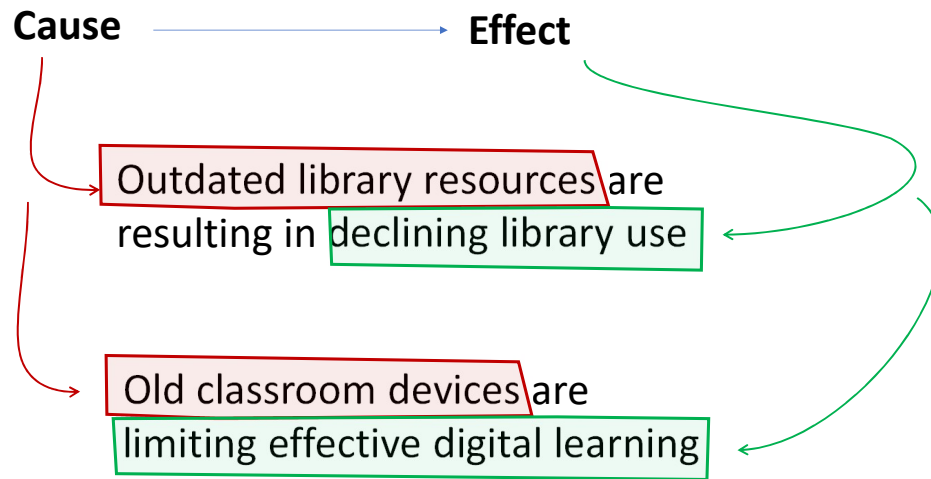
- Moving people and goods – not just roads.
- Lack of public transport options – its seen as an add on
- Interregional public transport and within region are not responding to changes eg new developments – extent, types, funding, infrastructure, vehicle design for all users. –
- Hindering productivity of network. Hindering access choice
- Affordable, efficient, frequent, ease of access, connectivity to other services etc is important.
- Full system influences eg fuel price.
- Public transport is undervalued but is safest way to travel (and affordable). PT is about Park and ride, Community transport and ride shares.
- Buses are stuck in traffic.
- Lack of connectivity between regions (eg card compatibility) and within region (eg lack of Thames to Hamilton link).
- Pubic transport is a lifelink for people without transport options. Not easy eg accessibility concerns.
- System view, governance without boundaries



Theme: Resilience

- Vulnerable/Deteriorating network (drop outs etc) are closing roads affecting access.
- Disruption (weather, crashes) causing closures More frequent and sever weather events.
- Inter regional resilience issues.
- Length of time to repair. Cost of repair.
- Critical links, Lifeline routes eg state highway in some communities
- Geographically challenged. Lack of strategic view.
- Affecting businesses, hardship, community and economic cost of disruption.
- Need to build resilience not just repair. Repairs inefficient eg hauling slip material. Frequent closures eg SH3.
- Different event levels need different responses – expensive. Reaction vs plan and build. Key route resilience – freight etc. Recognise function of different routes.
- Increased outage and repair with weather events.
- Diversions and critical routes – large volume on diversions.
- Communities being isolated.
- Tourism is affected by disruption.
- vulnerable network limiting access. Lifeline access.

Writing the problem statements



Problem statements (notes developed in workshop)

Cause → **Effect**

RESILIENCE	Vulnerable and deteriorating transport network is experiencing increasing disruption	affecting social and economic connections including access to essential lifeline services (isolating communities, affecting wellbeing)
ACCESS CHOICE	Lack of travel choices (ease comfort, and efficiency) is limiting uptake of public transport and alternative modes	Affecting affordable access, increasing emissions, and productivity outcomes (affecting where people choose to live, work, ...)
ECONOMIC	Constrained network and not being ahead of growth and strategic signals	Is affecting economic productivity and cost of living in our region (and inter regional national)
	Safety – important and needs to be in problem statement(s)	
FUNDING REVENUE	Funding limitations and restrictions	Is resulting in a failure to meet community expectations for the system and missing opportunities and strategic , economic sustainability



These problem statements will be refined and discussed at workshop 2

Next steps

- Circulate workshop conclusions
- Next workshop Friday 10th April
 - Benefits
 - Measures

Karakia

Unuhia, unuhia
Unuhia mai te uru tapu nui
kia wātea, kia māmā,
te ngākau, te tinana, te hinengaro,
i te ara takatū
Koia rā e Rongo
e whakairia ake ki runga
kia tina! TINA!
Haumi ē, hui ē, TĀIKI ē!



Draw on, draw on,
Draw on to the supreme sacredness
To clear, to free
our heart, body and soul
Our pathway prepared
Lo, there is peace
suspended high above
manifest!
draw together!
Affirm!

Ngā mihi

flow
TRANSPORTATION SPECIALISTS

Refined Problem Statements

Problem statements *(refined post workshop)*

Examples of context *(from Workshop 1 brainstorm)*

Resilience

The transport network is vulnerable to disruption events and is deteriorating, reducing access to communities and essential lifeline services.

Xx%

- Community isolation affects wellbeing.
- Access for people and goods is being affected

Economic productivity and cost of travel

The constrained network is not keeping ahead of growth, affecting economic productivity and cost of travel.

Xx%

- Within the region, and inter-regional
- Local travel and tourism
- Growth corridors (eg state highways) and tourism routes (eg one lane bridges in Thames –coromandel and bridge in Taupo).
- Also not aligned with strategic signals

Safe access and travel options

The transport system lacks safe, affordable, efficient travel choices, limiting access to social and economic connections, increasing emissions, and limiting productivity.

Xx%

- It's limiting uptake of public transport and alternative modes
- Needs to consider ease, comfort, and efficiency
- Affects where people choose to live and work

Delivery challenge - Funding and Revenue

Funding limitations and restrictions are resulting in a failure to meet community expectations for the system, missed opportunities to provide value for money, and lack of alignment with strategic direction.

This problem is not a problem with the transport system - it is a delivery challenge (i.e. it affects how we will be able to address the three problems listed above).

Example Benefit Statements

Problem statements
(refined post workshop)

MOT
Outcomes

Example Benefit Statements
(from Workshop 1
brainstorm)

<p>Resilience The transport network is vulnerable to disruption events and is deteriorating, reducing access to communities and essential lifeline services. Xx%</p>	<p>Resilience and Security</p>	<p>Improved resilience, with more reliable community access on lifeline routes Xx%</p>
<p>Economic productivity and cost of travel The constrained network is not keeping ahead of growth affecting economic productivity and cost of travel Xx%</p>	<p>Economic Prosperity</p>	<p>Improved productivity providing for growth and economic activity Xx%</p>
<p>Safe access and travel options The transport system lacks safe, affordable, efficient travel choices, limiting safe access to social and economic connections, increasing emissions, and limiting productivity. Xx%</p>	<p>Inclusive access</p>	<p>Improved travel choice, enabling more people to choose public transport, walking and cycling Xx%</p>
<p>Safe access and travel options The transport system lacks safe, affordable, efficient travel choices, limiting safe access to social and economic connections, increasing emissions, and limiting productivity. Xx%</p>	<p>Healthy and Safe People</p>	<p>Improved safety, with fewer people killed or seriously injured Xx%</p>
<p>Safe access and travel options The transport system lacks safe, affordable, efficient travel choices, limiting safe access to social and economic connections, increasing emissions, and limiting productivity. Xx%</p>	<p>Environmental Sustainability</p>	<p>Reduced reliance on fossil fuels, lowering emissions. Xx%</p>

Delivery challenge - Funding and Revenue

Funding limitations and restrictions are resulting in a failure to meet community expectations for the system, missed opportunities to provide value for money, and lack of alignment with strategic direction.



3 KARAKIA WHAKAMUTUNGA

Unuhia, unuhia

Unuhia mai te uru tapu nui

kia wātea, kia māmā,

te ngākau, te tinana, te hinengaro,

i te ara takatū

Koia rā e Rongo

e whakairia ake ki runga

kia tina! TINA!

Haumi ē, hui ē, TĀIKI ē!

Draw on, draw on,

Draw on to the supreme sacredness

To clear, to free

our heart, body and soul

Our pathway prepared

Lo, there is peace

suspended high above

manifest!

draw together!

Affirm!